

Low pulsation realized without damper  
Contributes to total cost reduction



Patent

JAPAN / CHINA / KOREA / TAIWAN

The Heart of Industry



## Low pulsation realized without damper Contributes to total cost reduction

The unique design of the FLP bellows pump achieves low pulsation and high pressure sustaining capability. This produces a stable discharge capacity and pressure without the use of a dampener. Reduced air consumption up to 30% compared to our previous models is also achieved.



### Low pulsation

The unique drive mechanism of the system determines and maintains optimum movement of the bellows and supply-air switching to give minimum discharge pulsation. (PAT.)



### Reduction of air consumption

Reduced air consumption up to 30% compared to our previous models is achieved with no reduction of pump performance.



### High sustained pressure capability

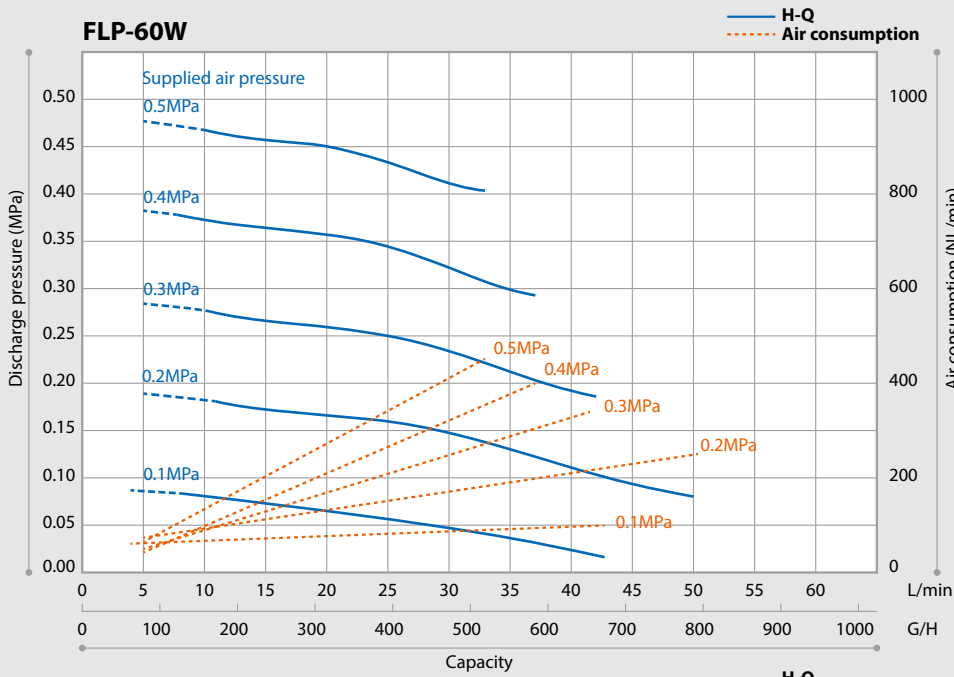
The optimum bellows movement improves pressure sustaining capability to maintain stable discharge capacity and pressure under frequent load change, especially in single wafer processing.



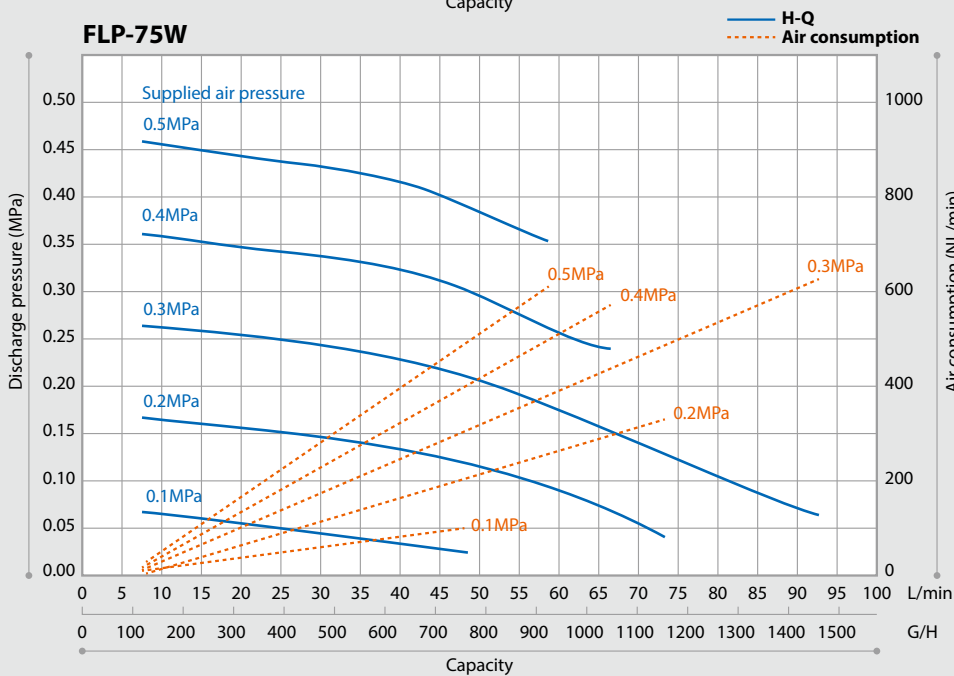
### Elimination of a dampener

The pump works without the use of a dampener, saving space inside equipment & installation costs such as fluoroplastic joints. The total weight/size of the equipment is also minimized.

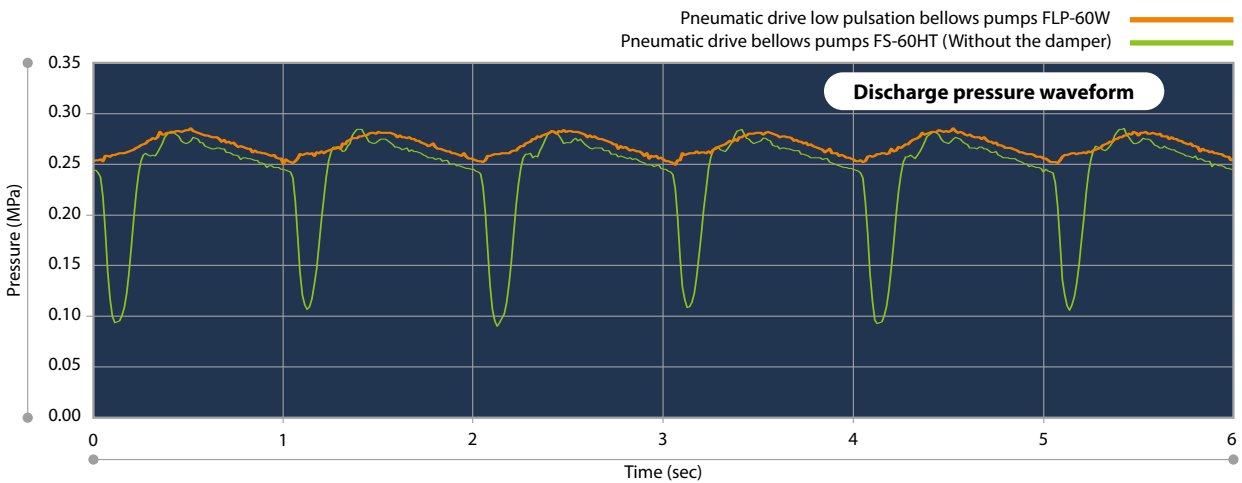
**FLP-60W**



**FLP-75W**



**Compared to existing pumps**



Sharp drops of discharge pressure are minimized, reducing the pulsation compared to existing pumps, Suction pressure drops are at the same level as existing pumps, but the pulsation width has been reduced.

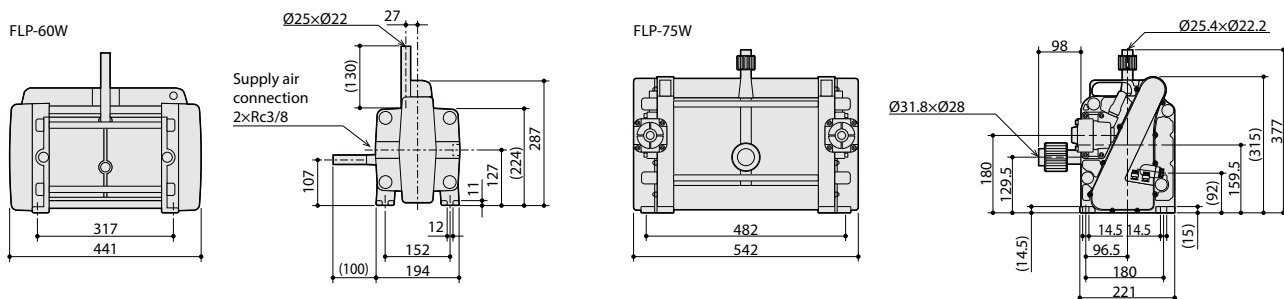
## Specification of pumps

Model	FLP-60W					FLP-75W				
Max. discharge capacity <sup>Note1</sup>	L/min					92				
Max. pulsation width	MPa					0.06				
Liquid temperature range (Max. supply air pressure)	°C (MPa)					5 - 100 (0.5), 101 - 150 (0.4), 151 - 180 (0.3)				
Supply air pressure range	0.41 - 0.5	0.31 - 0.4	0.21 - 0.3	0.11 - 0.2	0.1	0.41 - 0.5	0.31 - 0.4	0.21 - 0.3	0.11 - 0.2	0.1
Max. stroke rate	spm					160				
Max. air consumption	464	419	338	252	116	90	105	150	125	65
Max. viscosity	mPa·s					50				
Suction lift <sup>Note2</sup>	m					1				
Ambient temperature/humidity	°C /%RH					0 - 40 (non-condensing) / 30 - 60 (non-condensing)				
Storage temperature/humidity	°C /%RH					-10 - 60 (non-condensing) / 20 - 70 (non-condensing)				
Installation location	Do not install the pump (Out of doors / In a dusty environment)					Do not install the pump (Out of doors / In a dusty environment)				
Liquid line connection bore	IN					Ø31.8×Ø28.0mm (PFA) 1-1/4 inch union nut and sleeve (SUPER 300-type PILLAR FITTING manufactured by Nippon Pillar Packaging Co., Ltd.)				
	OUT					Ø25.4×Ø22.2mm (PFA) 1" inch union nut and sleeve (SUPER 300-type PILLAR FITTING manufactured by Nippon Pillar Packaging Co., Ltd.)				
Supply air connection size	Rc3/8					Rc1/2				
Purge air port	Ø4 one touch joint					Ø6 one touch joint				
Mass	kg					42				

Note1: The max. discharge capacity is based on pumping clean water at an ambient temperature and the supply air pressure of FLP-60W: 0.2MPa, FLP-75W: 0.3MPa.

Note2: The suction lift is based on pumping clean water at an ambient temperature and the maximum spm.

## Dimensions in mm



\*The same dimensions as the FS-60HT2 in width, depth, and base dimensions as well as inlet & outlet locations allows for simple pump replacement.

## Pump controller LPC-1



### Specification

Power voltage	24VDC (-5% to +10%)
Max. power consumption	0.11A
Ambient temperature / humidity	0 to 50°C (non-condensing) / 5 to 90%RH (non-condensing)
Storage temperature / humidity	-10 to 60°C (non-condensing) / 5 to 90%RH (non-condensing)
Installation location	Do not install the controller Out of doors. / In a dusty environment. / Under vibration or impact. Where the controller can get wet with water or oil. / In a corrosive atmosphere.
Explosion proof	This product is not explosion-proof (Do not install the controller under flammable explosive atmosphere)
Mass	1.3kg
Alarm	Leak alarm/Time up alarm/First alarm Electro pneumatic regulator alarm
Other function	In addition to normal operation, constant flow control is also possible. In addition, low pulsation is maintained even during constant flow control.

\*European Norm (EMC directive): This product conforms to EN61326-1: 2006 Class A. Observe the EMC requirement, or malfunction or damage of the product may result.

## Quick exhaust valve QEV



### Specification

Model	QEV-15V
Connection bore	Rc1/2
Supply air pressure range	0.1 - 0.5 MPa
Ambient temperature	5 - 40°C
Fluid name	Compressed air
Fluid temperature	5 - 40°C
Effective cross-section area (CV value)	IN → OUT 69mm <sup>2</sup> (3.8) OUT → EXH 82mm <sup>2</sup> (4.6)
Oil supply	N/A
Mounting position	N/A

- The QEV installed in between the pump and solenoid valve prevents corrosion of the solenoid valve by return air.
- The QEV reduces the resistance of air exhaust to smooth the bellows motion.

IWAKI CO., LTD. 6-6 Kanda-Sudacho 2-chome Chiyoda-ku Tokyo 101-8558 Japan TEL : (81)3 3254 2935 FAX : 3 3252 8892

IWAKI has global network. Please find your distributor location at

[www.iwakupumps.jp](http://www.iwakupumps.jp)

European Headquarter	: IWAKI Europe GmbH	TEL: (49)2154 9254 0	FAX: 2154 9254 48
Germany	: IWAKI Europe GmbH	TEL: (49)2154 9254 50	FAX: 2154 9254 55
The Netherlands	: IWAKI Europe GmbH (Netherlands Branch)	TEL: (31)74 2420011	FAX: (49)2154 9254 48
Italy	: IWAKI Europe GmbH (Italy Branch)	TEL: (39)0444 371 115	FAX: 0444 335350
Spain	: IWAKI Europe GmbH (Spain Branch)	TEL: (34)93 37 70 198	FAX: 93 47 40 991
Poland	: IWAKI Europe GmbH (East Europe Branch)	TEL: (48)12 347 0755	FAX: 13 67 20 30
Belgium	: IWAKI Belgium N.V.	TEL: (32)13 67 02 00	FAX: 12 347 0900
Denmark	: IWAKI Nordic A/S	TEL: (45)48 24 2345	
Finland	: IWAKI Suomi Oy	TEL: (358)9 2745810	
France	: IWAKI France S.A.	TEL: (33)1 69 63 33 70	FAX: 1 64 49 92 73
Norway	: IWAKI Norge AS	TEL: (47)23 38 49 00	
Sweden	: IWAKI Sverige AB	TEL: (46)8 511 72900	( )Country codes

U.S.A.	: IWAKI America Inc.	TEL: (1)508 429 1440	FAX: 508 429 1386
Argentina	: IWAKI America Inc. (Argentina Branch)	TEL: (54)11 4745 4116	
Brazil	: IWAKI Do Brazil Comercio De Bombas Hidraulicas LTDA.	TEL: (55)19 3244 5900	FAX: 19 3244 5900
Indonesia	: IWAKI Singapore Pte Ltd.	TEL: (65)6316 2028	FAX: 6316 3221
Singapore	: IWAKI Singapore (Indonesia Office)	TEL: (62)21 6906606	FAX: 21 6906612
Malaysia	: IWAKI Sdn. Bhd.	TEL: (60)3 7803 8807	FAX: 3 7803 4800
Australia	: IWAKI Pumps Australia Pty Ltd.	TEL: (61)2 9899 2411	FAX: 2 9899 2421
China (Hong Kong)	: GWFT IWAKI Engineering & Trading Co., Ltd.	TEL: (852)2607 1168	FAX: 2607 1000
China (Guangzhou)	: IWAKI Pumps Co., Ltd.	TEL: (86)20 84350603	FAX: 20 84359181
China (Shanghai)	: IWAKI Pumps (Shanghai) Co., Ltd.	TEL: (86)21 6272 7502	FAX: 21 6272 6929
Korea	: IWAKI Korea Co., Ltd.	TEL: (82)2 2630 4800	FAX: 2 2630 4801
Taiwan	: IWAKI Pumps Taiwan Co., Ltd.	TEL: (886)2 8227 6900	FAX: 2 8227 6818
Thailand	: IWAKI (Thailand) Co., Ltd.	TEL: (66)2 322 2471	FAX: 2 322 2477

⚠ Caution for safety use:  
Before use of pump, read instruction manual carefully to use the product correctly.

Actual pumps may differ from the photos. Specifications and dimensions are subject to change without prior notice. For further details please contact us.

⚠ Legal attention related to export.

Our products and/or parts of products fall in the category of goods contained in control list of international regime for export control. Please be reminded that export license could be required when products are exported due to export control regulations of countries.

The posting and copying from this catalogue without permission is not accepted firmly.